



Zellerbach

FAMILY FOUNDATION

2014
ANNUAL
REPORT



Dear Friends and Colleagues:

For over 59 years, the Zellerbach Family Foundation (ZFF) has been committed to its mission to be a catalyst for constructive social change by initiating and investing in efforts that strengthen families and communities. We are proud to support the work of individuals, organizations, and institutions whose efforts improve the lives of vulnerable children and families, enliven the arts, and sustain culture in all its variety in the Bay Area.

2014 brought many changes to ZFF, starting with the appointment of Allison Magee as the foundation's executive director. Under her leadership, ZFF is working to strengthen its grantmaking and maximize its impact in San Francisco and the Bay Area.

We are encouraged by recent legislative advancements and an increased understanding and use of best practices in the field that have resulted in the development of new and reformative approaches to serve system-involved children and families. To build on this momentum, ZFF has increased funding for its Improving Human Service Systems program area. In doing so, ZFF seeks to strengthen its partnerships and identify new opportunities to promote effective policy and practice.

ZFF continues to support immigrants and refugees and the organizations that serve them. Last fall's Executive Action on Immigration will impact an estimated 1.6 million immigrants in California, 177,000 of whom live and work in the Bay Area. While enactment of the new policies has been temporarily suspended, ZFF is committed to working closely with our partners to ensure a coordinated and successful approach once implementation begins.

ZFF also remains committed to its community arts program. We recognize that now more than ever, Bay Area artists and arts organizations are in need of creative solutions to the many new challenges they face. In partnership with the William and Flora Hewlett Foundation and the Wallace Alexander Gerbode Foundation, ZFF awarded over \$800,000 in 2014 to support emerging Bay Area artists.

Overall, in 2014 ZFF awarded over 300 grants totaling \$4.8 million that ranged in size from \$1,000 to \$110,000. We want to acknowledge the many community, government, academic, and foundation colleagues with whom we have partnered this year, and thank the Foundation's Board of Directors and staff for their contributions and commitment to this work. We would also like to express our gratitude to Lisa Steindler and Erika Chong Shuch who have completed their terms on the Foundation's Community Arts Panel. They served with distinction and we thank them for the many hours of thoughtful consideration they have given to our community arts program.

Sincerely,



William J. Zellerbach
Chairman



Thomas H. Zellerbach
President

Table of Contents

■ Annual Message.....	3
■ Mission and Values.....	6
■ By the Numbers.....	8
■ Improving Human Service Systems.....	9
■ Immigrants and Refugees.....	17
■ Strengthening Communities.....	25
■ Community Arts.....	27
■ Youth Development.....	42
■ Major Community Institutions.....	44
■ Grant Support.....	45
■ Statement of Financial Position.....	47
■ Board of Directors and Staff.....	48

Mission

The Mission of the Zellerbach Family Foundation is to be a catalyst for constructive social change by initiating and investing in efforts that strengthen families and communities.

Values

- 1. Responsibility:** We value the respected reputation earned by the Zellerbach Family Foundation through its work over the years.

Application: We honor the founders of the Foundation and the work of our predecessors by holding to the highest standards of integrity, professionalism, and care in all that we do and are mindful that the Foundation exists to serve the community rather than to advance the interests of individuals associated with the Foundation

- 2. Perpetuity:** We value the ability of private philanthropy to serve a unique and ongoing role in American society.

Application: The Foundation diligently attends to preserving and enhancing its financial corpus in order to meet the challenges of the future as well as the present.

- 3. Impact and Significance:** We value grantmaking that maximizes our contribution toward constructive social change and honors our civic commitment to the San Francisco Bay Area.

Application: We focus our grantmaking both geographically and programmatically on areas and opportunities where our assets and expertise can add the most value.

- 4. Innovation and Openness to New Approaches:** We value the ability to explore and advance new approaches in order to create more effective, sustainable solutions as the needs and challenges of society evolve and we are willing to take risks to that end.

Application: We seek to ensure that our grantmaking remains relevant and dynamic by recognizing and responding to emerging needs and challenges and we are willing to seed promising ideas.

5. Diversity: We value the richness that diversity brings to communities and the opportunities it provides to strengthen mutual appreciation and understanding across cultures.

Application: We purposefully encourage experiences that build inclusive communities.

6. Self-Determination: We value the mutual benefit derived from the active engagement of individuals in decisions that affect their lives and their communities.

Application: We purposefully seek to invest in efforts that afford active involvement in decision-making to all community members and that develop leadership from within communities.

7. Enhancing Opportunity: We value the ability to focus much of our work on those with the least opportunity.

Application: We purposefully seek to invest in efforts that enhance opportunity. Projects that seek to improve the future for the disadvantaged and the vulnerable are a major focus of the Foundation.

8. Continuous Learning and Active Involvement: We value learning from and with others as we take an active role in shaping the projects supported by the Foundation.

Application: We strive to constantly increase our knowledge base through active engagement with grantees, community members and leaders, advisors, and academics.

9. Collaboration: We value partnerships and collaborations that enrich our grantmaking.

Application: We purposefully seek out and create opportunities to work with others.

10. Mutual Respect and Shared Leadership: We value and believe that our work benefits from the Foundation's culture, which promotes mutual respect and shared leadership among and between the members of the Board and Staff.

Application: The Foundation continually develops the expertise of its Staff and the knowledge of its Board and fosters a collegial and collaborative environment in which to carry out the Foundation's mission.

11. Leadership: We value the contribution that effective leadership brings to constructive social change.

Application: In the course of our work, we support acknowledged leaders and create opportunities for potential leaders.

By the Numbers

The following is a summary of the Zellerbach Family Foundation's assets and grantmaking for the year ending December 31, 2014.



GENERAL FINANCES

Total Assets
\$133,824,850



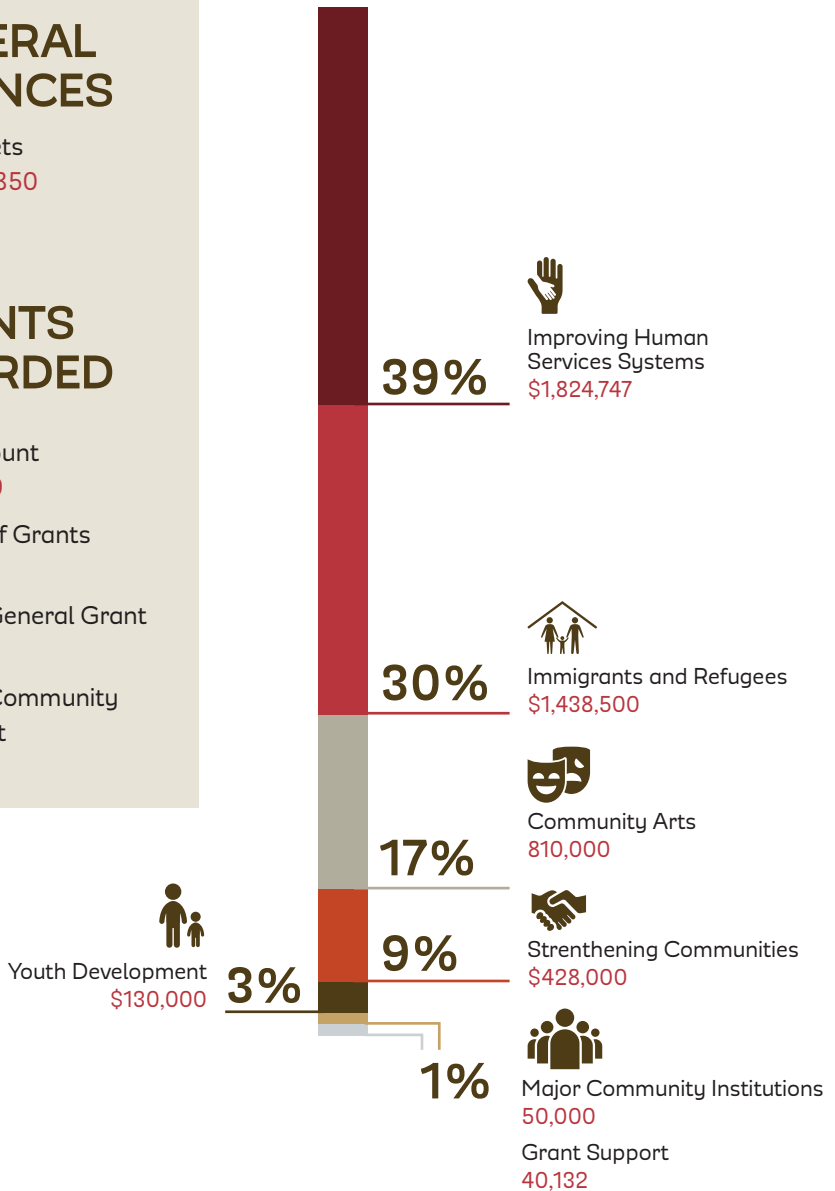
2014 GRANTS AWARDED

Total Amount
\$4,721,379

Number of Grants
327

Average General Grant
\$38,347

Average Community Arts Grant
\$3,600



Improving Human Service Systems

Grants in this category help improve the management, practice, and accountability of public systems serving vulnerable children, youth, and families. The Foundation seeks opportunities to promote thoughtful policy work, practical applications of policy changes, and documentation and dissemination of results.

The primary focus of grants in this area is on public systems because they provide

the greatest opportunities for leveraging major resources and impacting broad segments of the population. Grantmaking has been targeted to the mental health, child welfare, and juvenile justice service systems and at encouraging positive interactions at the policy and program levels among these three sectors and the adult criminal justice system.

Six principles underlie grantmaking in this category:

- 1.** Grants encourage collaboration among service sectors to learn and work together in the interests of children and families.
- 2.** Grants focus on promoting the strengths and assets of people at risk of becoming deeply involved with public systems.
- 3.** Grants encourage consumers and families to get involved in policy work, governance, service delivery, and evaluation. This participation promotes grantmaking that is responsive to diverse populations.
- 4.** Grants add value to the work by advancing the field through learning what works and sharing that knowledge with others. New grants usually build on previous work supported by ZFF.
- 5.** Grants are informed by experts in the policy arena, in public systems, and in academia, and are grounded in real life knowledge and experience.
- 6.** Grants help to leverage and sustain public support for improving the ways public systems do business.

San Francisco Children of Incarcerated Parents Partnership **\$80,000**

Friends Outside

To continue staffing and supporting activities of a collaboration of public and private agencies working to raise awareness and improve the lives of San Francisco's children with incarcerated parents.

Tools to Support Children with Incarcerated Parents **\$40,000**

A Home Within

To continue to develop and distribute online trainings, tools and curricula for lay staff and caregivers working with incarcerated parents as well as children and youth whose parents are incarcerated.

Children of Incarcerated Parents Data Project **\$35,000**

Community Works West

To analyze and disseminate findings from a one-time survey of the entire San Francisco and Alameda County jail populations to better understand the number of incarcerated adults with minor children in these two systems, and to help inform policies and practices related to children of incarcerated parents in each of these counties.

Project WHAT! (We're Here and Talking) **\$75,000**

Community Works West

To continue to employ, train and support youth who have had an incarcerated parent to raise awareness about the impact of parental incarceration on children with the goal of improving services and policies that affect these youth.

One Family **\$100,000**

Community Works West

To continue support for a collaboration with the San Francisco Sheriff's Department, Human Services Agency and Adult Probation Department to increase and improve opportunities for children to remain connected to their parents during their parents' incarceration in the San Francisco County jails and upon their release to the community.

Back to Family Pilot Program for Incarcerated Fathers and their Children **\$65,000**

Centerforce

To continue a pilot program that supports fathers incarcerated in or recently released from Alameda County's Santa Rita Jail to strengthen their relationships with their children.

**Parent and Caregiver Advisory Group for Alameda County
Children of Incarcerated Parents Partnership** **\$10,000**

A Better Way

To support the creation of a parent and caregiver advisory group to inform the work of Alameda County Children of Incarcerated Parents Partnership.

**Guidance for Attorneys Representing Transition Age Foster
Youth with Developmental or Psychological Disabilities** **\$30,000**

Legal Services for Children

To support the development of guidelines for providing legal representation to non-minor dependents with significant developmental or psychological disabilities.

Mental Health for Alameda County Foster Youth **\$50,000**

Alameda County Foster Youth Alliance

Community Initiatives

To support a study of the first cohort of Alameda County foster and probation youth to “age out” of care at 21, with a particular focus on their transition from the children’s mental health system to the adult system of care.

Fostering Connections Evaluation **\$50,000**

University of Chicago, School of Social Service Administration

To contribute to the continuation of a statewide evaluation of the impact of the California Fostering Connections to Success Act (AB 12) on outcomes of foster youth as they transition to adulthood.

California Juvenile Record Sealing Education Project **\$10,000**

Center on Juvenile and Criminal Justice

To support the maintenance of a user-friendly website that provides county-specific information about practices, procedures and costs for sealing juvenile records.

**An Open-Source Approach to Coordinating Transitional-Age
Youth Services** **\$25,000**

PEERS

To contribute to a two-day statewide conference and creation of open source technology to facilitate collaboration among agencies addressing the well-being of transitional-age youth.

California Council on Youth Relations **\$50,000**

New America Media (formerly Pacific News Service)

To support the integration of California Council on Youth Relation's policy work by and on behalf of system-involved youth, and Youth Wire, a media portal of youth voices aimed at local and state decision makers.

Internship Project **\$75,000**

California Youth Connection

To expand the placement and support of former foster youth as interns with CYC chapters in Bay Area counties to help strengthen the chapters and improve local policy and practice.

Y.O.U.T.H. Training Project **\$110,000**

California Youth Connection

To support wellness programming for an organization of current and former foster youth who train child welfare workers and others about working with foster children; to support the expansion and promotion of an exhibit that portrays the foster youth experience; and to provide a forum for shared learning and support for ZFF grantees focused on youth leadership.

Leadership Transition for National Foster Youth Action Network **\$7,400**

National Foster Youth Action Network (now Foster Youth in Action)

To support transitional planning and coaching to ensure the organization's smooth transition to new leadership.

Meaningful Youth and Young Adult Engagement for the Advancement of San Francisco Policy and Practice for Transitional Age Youth **\$60,000**

Transitional Age Youth San Francisco (TAYSF)

San Francisco Study Center

To continue to support and build the leadership, research and educational capacity of young adults and ensure that local policies reflect the needs and experiences of system-involved, transition age youth.

Youth in Mind **\$40,000**

Youth In Mind

To support ongoing organizational development for an agency led by youth involved in and working to improve public mental health services.

Bay Area Social Services Consortium	\$15,000
<i>UC Berkeley School of Social Welfare</i>	
Regents, University of California at Berkeley	
To support a collaboration of county social service agencies and universities and foundations that fosters shared learning and activities designed to improve human service systems and strengthen communities of vulnerable children, youth and families.	
California Child Welfare Co-Investment Partnership	\$40,000
<i>Community Initiatives</i>	
To support a collaborative of public agency and private foundation investors in the child welfare system to leverage their collective resources to improve child welfare outcomes.	
Caregiver Study	\$50,000
<i>UC Berkeley School of Social Welfare</i>	
Regents, University of California at Berkeley	
To conduct a study that sheds light on the living circumstances, well-being and outcomes of vulnerable children living in kinship and foster family homes in California, which will help inform statewide policy decisions about caregivers' access to financial subsidies and support services.	
Engaging Relative Caregivers in California's Continuum of Care Reform	\$50,000
<i>The Alliance for Children's Rights</i>	
To support ongoing efforts to promote equitable supports and services for California foster children who are raised by relatives.	
Healthier Connections	\$50,000
<i>California Court Appointed Special Advocates (CASA) Association</i>	
To support the development and dissemination of tools and training to assist CASA volunteers in their efforts to understand and address the mental health needs and general well-being of dependent children and youth.	
Children's Mental Health Media Project	\$25,000
<i>Fostering Media Connections</i>	
To support targeted media coverage that illuminates the provision of mental health services to children involved in the child welfare and probation systems and informs related advocacy work.	

- Mental Health Project** **\$50,000**
Child & Family Policy Institute of California
 To support continued efforts to improve the intersection of mental health and child welfare services, and to build and disseminate information about research-based practice implementation.
- Improving California's Children's Mental Health System** **\$35,000**
Young Minds Advocacy Project
 To synthesize the many changes to California's children's mental health system, analyze the impact of these changes on children and youth, and recommend a strategic plan for improving the system and holding it accountable.
- Improving Psychotropic Medication Practices for Foster and Probation Youth in Alameda County** **\$55,000**
Behavioral Health Care Services
 Alameda County Health Care Services Agency
 To support ongoing efforts to improve psychotropic medication safety for children and youth in Alameda County foster care and probation.
- Commercially Sexually Exploited Children (CSEC) Action Project** **\$45,000**
National Center for Youth Law
 To support a CSEC Action Team of the California Child Welfare Council to develop training, tools and resources to address the needs of commercially sexually exploited and at-risk youth in California.
- Improving Screening and Identification of Commercially Sexually Exploited Children** **\$75,000**
West Coast Children's Clinic
 To support the piloting, analysis and revision of a valid and reliable screening tool to improve early identification of child victims of sexual exploitation.
- Improving Our Response to Child Sex Trafficking in Alameda County** **\$2,500**
West Coast Children's Clinic
 To support a one-day convening of local practitioners, public officials and other experts to discuss challenges in working with sex-trafficked youth and develop strategies and action steps to improve the local response.

Curriculum for Boys to Prevent Sexual Exploitation* **\$50,000**

The SAGE Project, Inc.

To support the development of a curriculum for boys to raise awareness about sexual exploitation and prevent them from becoming exploiters or exploited.

Improving Interactions between Youth and Law Enforcement **\$50,000**

Strategies for Youth

To support the development of a training-for-trainers for West Contra Costa County law enforcement to improve understanding of and interactions with youth; and to develop tools to assist youth in understanding legal issues and safety options related to commercial sexual exploitation.

Rebooting Services for High Risk Juveniles **\$45,000**

UC Berkeley School of Social Welfare

Regents, University of California at Berkeley

To support a five-phase initiative to engage a group of researchers, policymakers and practitioners to shape a research agenda and scientific roadmap for basic developmental science that can inform the timing and targets of clinically feasible risk reduction principles for high risk juveniles.

Community-Based Participatory Research on Toxic Stress **\$50,000**

Center for Youth Wellness

To support community-based participation in research to validate biomarkers for toxic stress in children and youth.

Children's Advocacy Center of San Francisco Database Initiative **\$60,000**

San Francisco Child Abuse Prevention Center

To support the initial planning of an integrated, multi-system database for San Francisco's Children's Advocacy Center.

West Oakland Family Engagement Initiative **\$50,000**

Lincoln Child Center

To support the development of a neighborhood-specific, multi-system, collaborative effort to improve attendance of young students in West Oakland schools.

* Grant rescinded due to material breach of grant agreement. Funds were not returned to the foundation.

Integration of Child Welfare and Mental Health Workforce Development **\$50,000***California Social Work Education Center (CalSWEC)*

Regents, University of California at Berkeley

To develop a strategic plan that describes CalSWEC's primary focus areas and program goals for development of a diverse workforce prepared to work in settings that require collaborative, integrative practices.

Gender and Culturally Responsive Mental Health Training and Learning Community **\$25,000***Brothers on the Rise*

San Francisco Study Center

To support a training institute and learning community to enhance the capacity of school-based mental health providers to address the unique needs of low-income urban male youth of color in Alameda County.

Advancing an Integrated Substance Use Disorder and Mental Health Training Curriculum in Bay Area Graduate Programs **\$40,000***California Institute for Behavioral Health Solutions*

To provide research-based training and recommendations to integrate substance use disorders into existing mental health curricula for graduate programs in social work, psychology and marriage and family therapy.

Rescission: Los Angeles County Department of Mental Health **\$(153)**

Grant from 2001

TOTAL Improving Human Service Systems **\$1,824,747**

Immigrants and Refugees

The Immigrants and Refugees Program is designed to take a comprehensive approach to facilitating the successful integration of newcomers and encouraging their informed and widespread participation in community life.

Four principles underlie grantmaking in this category:

- 1.** The Bay Area's large and diverse immigrant population enriches our communities with new ideas, cultures, talents, and energy.
- 2.** Immigrant integration is a "two-way street." Newcomers need to learn about and adapt to life in the United States, and established residents, institutions, and community organizations also need to learn about newcomers and make basic accommodations that will facilitate their successful transition into local communities.
- 3.** Treating immigrants as full members of our communities strengthens the social fabric and improves the quality of life for everyone.
- 4.** Immigrants and refugees have the same primary needs and concerns as other residents: safe and secure families and neighborhoods, quality education, and affordable health care.

Zellerbach Family Foundation funding responds to the needs of newcomers and to the challenges of the organizations that serve them. Collectively, the grants in this program support projects that build the skills and knowledge of community members and/or project participants, promote fairness in public policies, strengthen the capacity of community-based organizations, and promote better communication and coordination among organizations so that the needs of community members can be met more effectively. Many of our projects will include activities that cut across these categories.

Standardized Definitions and Reporting for Immigration Legal Services Providers **\$9,500**

Catholic Legal Immigration Network

To support the creation of a standardized reporting format and a set of commonly used terms that can be adapted for use by nonprofit immigration legal services providers in the Bay Area and the foundations that support them.

Community Education about the Safe and Responsible Drivers Act **\$55,000**

California Immigrant Policy Center

Asian Americans Advancing Justice

To support the development of a comprehensive community education and outreach plan and a multilingual toolkit of resources regarding a new California law that enables undocumented immigrants to apply for driver's licenses.

California Trust Act, Community Education Resources **\$55,000**

Asian Law Caucus

To support the development, production, and distribution of community education resources related to the Trust Act, a new California law that improves community safety and the stability of immigrant families by prohibiting state and local law enforcement agencies from detaining undocumented immigrants solely on the basis of their immigration status and when they are otherwise eligible for release.

Unaccompanied Immigrant Children Program **\$45,000**

Oakland Unified School District

To support the creation of an inter-agency network in the Oakland Unified School District that will address the educational, social, and legal services needs of unaccompanied immigrant children in the Oakland Unified School District.

Post Release Accompaniment Project **\$40,000**

Centro Legal de la Raza

To support the creation of a volunteer-based network that provides emergency assistance to asylum applicants who are released from the West County Detention Facility in Richmond, California.

Coordination of the Unaccompanied Immigrant Children Roundtable **\$10,000**

Legal Services for Children

To support the coordination of a network of organizations that was established as an emergency response to the need for legal counseling and representation by the more than 1,500 unaccompanied immigrant children who arrived in the Bay Area in urgent need of legal and social services.

Unaccompanied Immigrant Children Program **\$25,000**

San Francisco Unified School District

To support an inter-agency network that addresses the educational, social, and legal services needs of unaccompanied immigrant children in the San Francisco Unified School District.

Legal Services for Unaccompanied Immigrant Children **\$25,000**

East Bay Sanctuary Covenant

To support immigration legal services, information and referral, and community education and outreach to unaccompanied immigrant children who have been detained by U.S. immigration authorities or are at risk of deportation.

Legal Services for Unaccompanied Immigrant Children **\$25,000**

Centro Legal del la Raza

To support immigration legal services, information and referral, and community education and outreach to unaccompanied immigrant children who have been detained by U.S. immigration authorities or are at risk of deportation.

Legal Services for Unaccompanied Immigrant Children **\$25,000**

Canal Alliance

To support immigration legal services, information and referral, and community education and outreach to unaccompanied immigrant children who have been detained by U.S. immigration authorities or are at risk of deportation.

Equal Access to Services Project **\$30,000**

Chinese for Affirmative Action

To support a project that works to increase the access of limited-English proficient individuals to critical government services and programs by working with local agencies to develop effective policies and procedures that make translated materials and interpreters available in the major languages spoken by local residents.

Community Education and Leadership Development **\$40,000**

Chinese Progressive Association

To support a project designed to improve economic opportunities for low-wage Chinese workers in San Francisco and to orient them to local communities and institutions through community education workshops and leadership development training.

Immigration and Citizenship Program**\$35,000***Coastside Hope*

To support family-based immigration legal services, citizenship test preparation classes, and community education and outreach to low-income immigrants and refugees residing in the rural coastal communities of San Mateo County.

Day Worker Center of Santa Cruz County**\$45,000***Community Action Board of Santa Cruz County, Inc.*

To support a program that provides a structured and dignified setting for immigrant workers to find safe employment, develop job skills, improve wages, and become fully engaged members of the community.

General Support**\$40,000***Centro Laboral de Graton*

To support a program that provides a structured and dignified setting for immigrant workers to find safe employment, develop job skills, improve wages, and become fully engaged members of the community.

General Support**\$60,000***Day Labor Centers, Hayward & Oakland
Community Initiatives*

To support a program that provides a structured and dignified setting for immigrant workers to find safe employment, develop job skills, improve wages, and become fully engaged members of the community.

Monument Impact Day Labor Center**\$40,000***Monument Impact*

To support a program that provides a structured and dignified setting for immigrant workers to find safe employment, develop job skills, improve wages, and become fully engaged members of the community.

General Support**\$40,000***Day Worker Center of Mountain View*

To support a program that provides a structured and dignified setting for immigrant workers to find safe employment, develop job skills, improve wages, and become fully engaged members of the community.

Program Assessment and Improvement **\$17,000**

Dolores Street Community Services, Inc.

To support a program assessment and improvement process for the San Francisco Day Labor Program and Women’s Collective.

San Francisco Day Labor Program and Women’s Collective **\$40,000**

Dolores Street Community Services, Inc.

To support a program that provides a structured and dignified setting for immigrant workers to find safe employment, develop job skills, improve wages, and become fully engaged members of the community.

Community Development & Education Program **\$35,000**

East Bay Sanctuary Covenant

To support a program that helps orient immigrants and refugees to local communities and institutions and promotes local community involvement through community education workshops, information and referral services, leadership development training, and English as a Second Language instruction.

Community Education & Outreach **\$40,000**

Educators for Fair Consideration

Community Initiatives

To support a ten-county regional community education and outreach effort aimed at increasing awareness among students, parents, educators, and community allies about the challenges and concrete opportunities facing undocumented young people as they pursue college, professional careers, and lawful immigration status in the United States.

Domestic Worker Community Education Project **\$45,000**

Golden Gate University

Women’s Employment Rights Clinic

To support a new project that is designed to improve the economic self-sufficiency of immigrant domestic workers in the Bay Area by educating staff from immigrant-serving organizations about new and existing wage and hour protections that will significantly increase the earnings for some domestic workers.

California Immigrant Integration Initiative**\$20,000***Grantmakers Concerned with Immigrants and Refugees*

To support the Bay Area activities of a statewide project that engages foundations and local governments in efforts to develop and invest in strategies that advance the integration of immigrants and refugees at the local and state level.

Immigration Provider Fraud Prevention Project**\$30,000***Immigrant Legal Resource Center*

To support a community education and outreach campaign aimed at preventing fraudulent practices committed by unscrupulous immigration consultants, notaries public, and immigration attorneys.

Immigration Legal Services**\$35,000***Canal Alliance*

To provide a variety of immigration legal services and community outreach about immigration matters to immigrants and refugees residing in Marin and other northern California counties.

Immigration Legal Services**\$60,000***Catholic Charities of the East Bay*

To support the provision of family-based immigration legal services and community education and outreach to low-income immigrants who reside in western Contra Costa County.

Africa Advocacy Network**\$50,000***Dolores Street Community Services, Inc.*

To support family-based immigration legal services, community education and outreach, and capacity building for a program that serves low income African and Afro-Caribbean immigrants and refugees from across the Bay Area.

Immigration Legal Services**\$35,000***Community Legal Services in East Palo Alto*

To support family-based immigration legal services and community education and outreach for low-income immigrants in East Palo Alto and other southern San Mateo County communities.

Immigration Legal Services

\$105,000

International Institute of the Bay Area

To support family-based immigration legal services and community education and outreach to low-income immigrants and refugees in San Mateo, Alameda, and Contra Costa Counties.

Pro Bono Asylum Program

\$35,000

Lawyers' Committee for Civil Rights of the San Francisco Bay Area

To support free legal representation to indigent asylum seekers, train non-immigration lawyers and nonprofit legal services providers in the areas of asylum and refugee law, and interact with the local offices of the Bureau of Immigration and Customs Enforcement to facilitate the fair treatment of Bay Area asylum seekers.

Immigrant Children Project

\$80,000

Legal Services for Children

To support immigration legal services, information and referral, and community education and outreach to immigrant youth in the Bay Area who have been detained by U.S. immigration authorities or are at risk of deportation.

English Language Acquisition Project

\$22,000

Mujeres Unidas y Activas

To support a project that promotes and facilitates English language acquisition among the Latina immigrant women staff and members of Mujeres Unidas y Activas.

Caring Hands Program

\$40,000

Mujeres Unidas y Activas

To support activities that help low-income Latina immigrant women achieve economic self-sufficiency through job skills training and employment placement services in home health care, childcare, and housekeeping.

Adult Education Programs

\$30,000

Puente de la Costa Sur

To support English as a Second Language, Spanish literacy instruction, citizenship test preparation, and GED tutoring to Latino immigrants residing in the San Mateo County coastal communities of Pescadero, La Honda, Loma Mar, and San Gregorio.

Food Cooperative Incubation Project	\$75,000
<i>Women's Action to Gain Economic Security</i>	
To create employment and business ownership opportunities for low-income immigrant women through the formation of a new food-related worker-owned cooperative business in partnership with La Cocina.	
TOTAL Immigrants & Refugees	\$1,438,500

Strengthening Communities

The Strengthening Communities program is intended to improve the well-being of individuals and families living in distressed neighborhoods. Grants aim to strengthen the social fabric of communities through support of efforts that foster local capacity building, resident participation in decision-making and community improvement efforts, and stronger neighborhood institutions and community organizations. The Foundation recognizes that an informed and active citizenry is essential for building and sustaining vibrant

communities that address the needs of all residents, and nowhere is the need for resident participation more critical than in our schools. Public schools represent a powerful vehicle for gathering people together, and family involvement plays a direct and critical role in student success. By mobilizing parents who reflect the full diversity of our communities, effective parent engagement projects can improve educational outcomes for children and build both strong public schools and healthier, more vital communities.

“Parents are critical to building community support for public schools and for recruiting the human and financial resources schools need from their communities to survive and thrive.”

General Support

\$75,000

Bay Area Parent Leadership Action Network

To strengthen the efforts of parents to become effective leaders in schools by providing networking, training sessions, capacity building, and collaborative civic engagement opportunities for parent leaders and community organizations.

Family Engagement Program

\$60,000

Hillcrest Elementary School

Coleman Advocates for Children

To support a school-based parent engagement program that fosters authentic relationships between parents and educators, connects families to community services and resources, and provides a variety of opportunities for parents to participate in school-based governance and volunteer efforts.

Parent Partners Program	\$85,000
<i>Mission Graduates</i>	
To support a project that engages and empowers low-income Spanish-speaking parents in San Francisco's Mission District to take active roles in their children's education and works in partnership with schools to establish sustainable parent engagement practices and promote college-going cultures at home and at school.	
Oakland Schools Initiative	\$50,000
<i>Oakland Community Organizations</i>	
To support a multi-year organizing project that aims to improve academic outcomes for youth, facilitate parent and community involvement, and bring about sustainable school reform in the Oakland Unified School District.	
Parent Engagement Program	\$55,000
<i>Oakland International High School</i>	
International Network of Public Schools	
To support a Family Learning Center and a comprehensive parent engagement program at an Oakland Unified School District high school that provides a college-preparatory education for late-entry English Language Learner students.	
OUSD Family Engagement Toolkit	\$100,000
<i>Oakland Public Education Fund</i>	
To support the second phase of a two-year effort to develop a toolkit and a professional development protocol that provides educators and families with support, direction, and the resources they need to build and sustain effective school-based family engagement programs that bolster school improvements and student success	
Retrospective Report	\$3,000
<i>Parents for Public Schools of San Francisco, Inc.</i>	
To support a retrospective report that will document and analyze the organization's impact on the San Francisco Unified School District since its founding.	
TOTAL Strengthening Communities	\$428,000

Community Arts

The arts in all their variety are indispensable to the spirit and quality of life of the Bay Area. For over a quarter of a century, the Zellerbach Family Foundation has sought to ensure the availability of a wide variety of art experiences, to promote multicultural community art, encourage new artists, and improve the capacity to perform and develop new audiences, by funding through its community arts grants. The Foundation values the continued support of its Community Arts Program by the Wallace Alexander Gerbode and the William and Flora Hewlett Foundations.

The Community Arts Program

Grants in this category are recommended by the Foundation's Community Arts Panel composed of Bay Area practicing artists representative of the rich diversity of the local arts community.

Members participating on the Community Arts Panel in 2014 were: Kevin Chen, Visual Artist; Mina Morita, Theater Director and Artist; Robert Moses, Choreographer, Dancer; Jim Santi Owen, Composer, Musician; Erika Chong Shuch, Choreographer, Dancer; Lisa Steindler, Director, Actor.

ARTS ORGANIZATIONS

CounterPulse	Artists Residency Commissioning Program	\$7,500
Dancers' Group	In Dance publication	\$6,000
Kulintang Arts	year-round artistic presentations	\$6,000
Mission Cultural Center	CARNAVAL preparation/ participation	\$2,500
Museum of the African Diaspora	Drapetomania the Art of Afro-Cuba	\$3,000

Pro Arts	annual exhibitions and programming	\$7,500
Root Division	Second Saturday Exhibitions	\$4,500
SAFEhouse for the Performing Arts	Artist-in-Residence Program	\$5,000
SAFEhouse for the Performing Arts	RAW program, new work	\$6,500
San Francisco Cinematheque	Shapeshifters, cinematic viewing	\$750
SomArts	Glamorgeddon: The Spectacle	\$2,500
Southern Exposure	SO Ex Off-Shore, exhibitions	\$5,000
TOTAL Arts Organizations		\$56,750

POETRY, PUBLICATIONS, WRITING

Poetry Flash	Poetry Flash Literary Review and Calendar	\$4,000
Poetry Flash	Watershed Environmental Poetry Festival	\$2,500
RADAR Productions	walking literary tour/ North Beach	\$3,000
Theatre Bay Area	Theatre Bay Area Magazine	\$5,000
TOTAL Poetry, Publications, Writing		\$14,500

THEATER

Z Space Studio	Ego & Insufficiency	\$5,000
ARS Minerva	La Cleopatra	\$1,500
Aurora Theatre Company	Wittenberg	\$4,500
Berkeley Art Center Association	Wolves	\$1,000
Berkeley Art Center Association	Delicate Particle Logic, Indra's Net Theater	\$1,000
Bindlestiff Studio	The Guerrillas of Powell Street, Bindlestiff Studio	\$3,500
Brava For Women in the Arts	Love Balm for My Spirit Child	\$1,500
Brava For Women in the Arts	Sweet Maladies, Black Artists Contemporary Cultural Experience	\$4,000
Brava for Women in the Arts	Waxing West	\$2,000
Central Works	Recipe	\$2,500
CounterPULSE	Homo File	\$4,500
Crowded Fire Theater Company	Brahman/i: A One Hijra Comedy Show	\$5,500
Cutting Ball Theatre	Super Heroes	\$3,000

Dancers' Group	Macro residency performances, David Szlasa	\$2,000
Encore Theater	Hookman	\$7,500
foolsFURY Theater Company	Nocturne	\$1,500
foolsFURY Theater Company	Fury Factory	\$2,000
Golden Thread Productions	Z's Passage to Cordoba, Fifth String	\$5,000
Impact Theatre	MUTT, co-production, Impact Theater and Ferocious Lotus	\$4,000
Independent Arts & Media	Now For Now	\$2,500
Independent Arts & Media	Circus Bella in the Parks 2014	\$3,500
Intersection for the Arts	Ictus, Nogales	\$7,000
Intersection for the Arts	Blockbuster Season, Mugwumpin	\$6,000
Intersection for the Arts	Chasing Mehserle, Campo Santo	\$5,000
Intersection for the Arts	I am the Wind	\$1,000
Killing My Lobster aka The Lobster Theater Project	KML Holiday	\$4,000
La Pena Cultural Center	Amnesia, Aerial Lucky	\$2,500

La Pocha Nostra	Spoken choreography, collaboration with Sara Shelton Mann	\$4,500
Magic Theatre Inc.	PEN/MAN/SHIP, Magic Theatre	\$5,000
Movement Strategy Center	Make It Fresh: Creative Storytelling for the Urban Environment	\$1,500
New Conservatory Theatre Center (NCTC)	Pansy & Alaska Revisited	\$2,000
Playground	Hella Love Oakland	\$1,500
Queer Cultural Center	Topsy Turvy Circus	\$2,500
Queer Cultural Center	Queer Harlem	\$2,000
RADAR Productions	OX Project	\$3,500
San Francisco Mime Troupe (SFMT)	Ripple Effect	\$4,000
SF Playhouse	Bauer	\$3,000
Shotgun Players, Inc.	Harry Thaw Hates Everybody	\$4,000
The Custom Made Theatre Company, Inc.	Slaughterhouse 5/ Childrens Crusade	\$1,500
The Marsh	Lear's Shadow	\$4,500
Theatre of Yugen, Inc.	This Lingering Life	\$5,000

Theatre First	Fire Work	\$5,000
We Players	Vessels for Improvisation, We Players	\$1,500
Youth Speaks	Spirituals	\$7,500
Z Space Studio	Totalitarians	\$7,000
Z Space Studio	36 Stories by Sam Shephard	\$6,000
Zaccho SF	Love Letter to Black Fathers, Delina Brooks	\$5,000
TOTAL Theater		\$169,500

MUSIC

Asian Pacific Islander Cultural Center	Oyama Canon in D Kokinchoshi	\$3,000
Bay Area Jazz & Arts, Inc.	Jam Sessions in the Sound Room	\$2,000
Chamberworks, Sukay, Pachamama	40th Anniversary concerts	\$6,500
Composers, Inc.	Middlemarch in Spring	\$2,000
Dancer's Group	World Music Salons	\$5,000

Del Sol Performing Arts	Soundings	\$5,000
Eastside Arts Alliance	John Santos Sextet in concert	\$3,000
Gamelan Sekar Jaya	Sausur	\$7,500
Golden Gate Performing Arts	Songs from the Holocaust	\$3,000
Independent Arts and Media	O Oceania, American Orchestra	\$1,500
Intersection for the Arts	Sly and the Family Stone, tribute Undercover Presents	\$5,000
Intersection for the Arts	Jazz in the Neighborhood	\$4,000
Intersection for the Arts	Death, Love, & Life, Ensemble Mik Nawooj	\$1,000
Kitka	WinterSongs 2014	\$7,000
Korean Community Center	Wooden Fish Ensemble, Hyo-Shin-Na new work	\$4,000
Left Coast Chamber Ensemble	Reply to a Dead Man	\$2,500
Living Jazz	Annual Martin Luther King Jr. music concerts	\$6,000
Los Cenzontles Mexican Arts Center	Zydeco Mexican Connection	\$5,000
Musical Traditions, Inc./The Paul Dresher Ensemble	Artificial Memory	\$2,000

NEXMAP	Headlines, interactive multi-media	\$2,500
Oakland Interfaith Gospel Choir	spring concerts	\$4,500
Old First Center for the Arts (Old First Concerts)	a series of six concerts	\$4,000
Parallele Ensemble Corp.	new work	\$6,000
San Francisco Chamber Orchestra	Carlos Drummond de Andrade	\$2,000
San Francisco Friends of Chamber Music	Il Ponte	\$1,000
San Francisco Friends of Chamber Music	Jewish Music and Poetry Project	\$1,000
San Francisco Friends of Chamber Music	MUSA-Art Inspiring Art	\$1,000
San Francisco Friends of Chamber Music	New Keys in 2014	\$2,000
San Francisco Friends of Chamber Music	Wise Dreams and Fables of the Sky	\$2,500
San Francisco Friends of Chamber Music	S.F. Music Day	\$7,000
San Francisco Friends of Chamber Music	Splinter Reeds, in Switchboard Presents	\$1,000
San Francisco Friends of Chamber Music	Wild Rumpus for performance at New Music Center	\$2,000
San Francisco Friends of Chamber Music	sfSound, live and computer generated music concert	\$2,000

US/ Japan Cultural Trade Network	The Lariat	\$1,000
Volti	Pandora's Gift	\$4,000
TOTAL Music		\$118,500

DANCE

Amy Seiwert's Imagery	Sketch 4/Music Mirror	\$5,000
Anne Bluethenthal and Dancers	Pinata En L'Air	\$2,000
Art of the Matter	Private Life, Deborah Slater Dance	\$3,500
Asian Pacific Islander Cultural Center	The Detached, L. Lee	\$3,500
Asian Pacific Islander Cultural Center	Underneath Reflections, Marina Fukushima Dance Project	\$1,500
AXIS Dance Company	New collaboration with Marc Brew	\$6,500
Chhandam Chitresh Das Dance Company	India Flamenco Project, Chhandam Chitresh Das Dance Co.	\$5,500
Chinese Cultural Productions	Xing and Dynasty Revisited	\$3,000
CounterPulse	Chamber MacBeth, Rapid Descent	\$2,000

CounterPulse	Bear/Skin/Rite, Ciro Zero	\$4,000
CounterPulse	Number Zero, Smith Wymore	\$3,750
CounterPulse	Body/Sense/Scape, Germain and Dancers	\$3,000
CounterPulse	Scott Wells & Dancers, 5th Home Season	\$6,000
Dance Brigade	The Wind and The Rain, project agora	\$2,000
Dance Brigade	CABARET, Alayo Dance	\$5,500
Dance Brigade	Lakansyel by Afoutayi	\$2,500
Dance Brigade	Transitions, Folawole	\$1,500
Dance Brigade	Rocked By Women, S. Bush	\$2,000
Dancers' Group	Half and Halves, Duniya Dance	\$5,000
Dancers' Group	Michael and Roland, James Graham Dance	\$3,500
Dancers' Group	Economics of Effort, Cid Pearlman	\$4,500
Dancers' Group	Minotaur Avy K	\$3,000
Dancers' Group	Intrinsic Motion of Time and Space	\$2,500

Dancers' Group	Taboo & Heroes, Kiandanda Dance	\$2,000
Dancers' Group	The Escapement, K.Hawthorne	\$1,500
Dancers' Group	Tough, Potrzebie Dance	\$2,000
Dancers' Group	Type Face, Thick Rich Ones	\$1,500
Dancers' Group	All moments stop here, Daria Kaufman	\$1,000
Dancers' Group	Beast, tinypistol dance	\$2,500
Dancers' Group	Ceremonious/Unceremonious, Brontez Purnell	\$500
Dancers' Group	Fantasia, Mary Armentrout Dance	\$3,500
Dancers' Group	Five High, Post:Ballet	\$2,500
Dancers' Group	Peter and the Wolf, Sharp & Fine Dance	\$2,000
Dancers' Group	Sonorous Figures, BurnsWork Dance	\$3,500
Dancers' Group	The Cloud Messenger, Nava Dance Theatre	\$1,000
Dancers' Group	A Wake, Possibly Finnegans, 13th floor dance co.	\$2,000
Dancers' Group	TOUCH, David Herrera dance	\$2,000

Dancers' Group	Filaments, detour dance co.	\$1,500
Dancers' Group	Time Studies, Aura Fischbeck, 5th Home Season	\$1,000
Dancers' Group	S.F. Hip Hop Dance Festival	\$5,500
Dancer's Group	Fog Beast for an evening of new dance	\$2,000
Dancer's Group	The MAGO Project, Dohee Lee	\$4,000
Dandelion Dancetheater	Tongues Gather	\$2,000
Epiphany Productions	San Francisco Trolley Dances, 2014	\$7,000
Fictional Artists Contemporary Theatre/San Francisco dba FACT/SF	Invidious	\$2,500
Flyaway Productions	Multiple Mary and Invisible Jane	\$4,000
Garrett + Moulton Productions	Luminous Night, Garrett-Moulton Dance	\$6,000
Hope Mohr Dance	Notes Toward a Supreme Fiction, Hope Mohr	\$2,000
Intersection for the Arts	Performances at Pena Pachamama Cultural Center, Carolina Lugo and Carole Acuna's Ballet Flamenco	\$3,000
Intersection for the Arts	Seed Language, Embodiment Project	\$5,000

Intersection for the Arts/Erika C. Shuch Performance Project	Beast	\$5,000
Jess Curtis/Gravity Inc.	Dance That Documents Itself, Curtis and Szlasa	\$4,000
Joe Goode Performance Group	The Poetics of Space, Joe Goode	\$7,500
Levy Dance Inc.	Soar, Levy Dance	\$3,500
Margaret Jenkins Dance Studio, Inc.	Gate of Winds	\$7,500
Margaret Jenkins Dance Studio, Inc.	Shared Space, new work	\$3,000
Mixed Bag Productions	Hybrid 3: Form is Relentless, Sara Shelton Mann	\$5,500
Na Lei Hulu I Ka Wekiu	The Ho'ike Nui, Na Lei Hulu I Ka Wekiu	\$5,000
New Arts Foundation / Nancy Karp + Dancers	time and the weather, Nancy Karp	\$3,000
Push Dance Company	Point Shipyard Project	\$2,500
Raw Dance	Tenth Anniversary Home Season	\$4,500
Robert Moses Kin	Thick	\$5,000
STEPOLOGY	Bay Area Rhythm Exchange	\$6,000
The African American Art & Culture Complex	Whispering Tenderness, Push Dance	\$3,000

Theatre Flamenco of San Francisco	Solo Flamenco	\$4,000
Z Space Studio	The Twentieth Wife	\$4,500
TOTAL Dance		\$227,750

COMMUNITY ARTS PROGRAM TOTALS BY CATEGORY

Arts Organizations:	\$56,750
Dance:	\$227,750
Events, Exhibitions Festivals, Murals:	\$193,000
Music:	\$118,500
Poetry, Publications, Writing:	\$14,500
Theater:	\$169,500
TOTAL COMMUNITY ARTS PROGRAMS:	\$780,000

ARTS CAPACITY-BUILDING GRANTS

Performing Arts Assistance Program **\$20,000**

Theatre Bay Area

To support experienced professionals to provide consultation to grantees of the Foundation's Community Arts Program in the areas of coaching, training, advice or critique of a performance, planning a space, or targeting long-range artistic goals.

Bay Area Voices Program **\$10,000**

Yerba Buena Center for the Arts

To support local arts organizations by partially defraying production costs, enabling them to perform in a larger space to attract a wider audience.

TOTAL COMMUNITY ARTS **\$810,000**

Youth Development through the Arts

Grants in this category support efforts to help youth make a successful transition to adulthood through programs that provide caring adult relationships, life-enhancing experiences, and opportunities to explore and develop unique strengths. Grants are directed toward programs in low-income and distressed neighborhoods where youth have the greatest need and are focused on arts-based programs in which youth can explore, develop, learn through, and enrich their artistic experience.

“The world of art and culture is a vehicle for allowing young people to learn the skills, attitudes, and forms of communication necessary to fulfill their own unique potential.”

SchoolTime

\$30,000

Cal Performances

Regents, University of California at Berkeley

To support the SchoolTime Program, a performing arts program made available by Cal Performances to public school students in the Bay Area.

AileyCamp

\$30,000

Cal Performances

Regents, University of California at Berkeley

To support AileyCamp, a free six-week summer program of dance for low-income youth with academic, social, and domestic challenges.

Marsh Youth Theater	\$5,000
<i>The Marsh</i>	
To support the Marsh Youth Theater provided at the Marsh Theater in San Francisco.	
Young Musicians Program	\$10,000
<i>Community Music Center</i>	
To support the Young Musicians Program, music training for low-income student musicians.	
Art programs in San Francisco's Juvenile Hall	\$15,000
<i>Imagine Bus Project</i>	
To support an arts program within San Francisco Juvenile Hall.	
Arts programming within the Third Street Youth Center and Clinic	\$20,000
<i>Larkin Street Youth Services</i>	
To support arts programming at the Third Street Youth Center and Clinic in the Bayview Hunters Point neighborhood of San Francisco.	
Richmond Youth Media Project	\$20,000
<i>Richmond Youth Media Productions Inc.</i>	
To support a video, media arts, and communication program during out of school hours in Richmond, California.	
TOTAL Youth Development	\$130,000

Major Community Institutions

Grants in this category support efforts to help youth make a successful transition to adulthood through programs that provide caring adult relationships, life-enhancing experiences, and opportunities to explore and develop unique strengths. Grants are directed toward programs in low-income and distressed neighborhoods where youth have the greatest need and are focused on arts-based programs in which youth can explore, develop, learn through, and enrich their artistic experience.

Jewish Community Federation

\$10,000

To support the local programs of the Jewish Community Federation which strengthen Bay Area communities.

Fine Art Museums of San Francisco

\$10,000

To support the youth arts education programs of the San Francisco Fine Art Museums.

San Francisco Ballet Association

\$10,000

To support the youth arts education programs of the San Francisco Ballet.

San Francisco Opera Association

\$10,000

To support the youth arts education programs of the San Francisco Opera.

San Francisco Symphony Association

\$10,000

To support the youth arts education programs of the San Francisco Symphony.

TOTAL Major Cultural Institutions

\$50,000

“*To support the cultural life of San Francisco by continuing the Foundation’s long commitment to the city’s major institutions*”

Grant Support

Grants in this category support cross-cutting activities that address the broad interests of the Foundation. These grants provide support for publications, conferences, surveys, collaborations, organizations, or other efforts that enhance or inform the work of the Foundation or of its grantees. Grants in this category also support efforts of special importance to the Foundation that may be unrelated to its major grantmaking categories.

Nevada City Theatre Commission

\$5,000

To support a partnership between the Nevada City Theatre and KVMR Community Radio to create a performing arts district in Nevada City, the birthplace of Jennie Baruh Zellerbach.

Grantmakers for Effective Organizations

\$3,050

To support participation in national community of grantmakers working to advance smarter grantmaking practices that enable nonprofits to grow stronger and achieve better results.

Grantmakers for Children, Youth and Families

\$1,500

To support educational services, resources, and forums for information sharing and collaboration among grantmakers and experts in the fields of child welfare, family support, community building, and youth development.

Council on Foundations

\$13,040

To support participation in a national membership association of grantmaking foundations and corporations.

Grantmakers in the Arts

\$1,000

To increase the presence of arts philanthropy within the broader foundation community and to strengthen the field of private sector arts grantmaking by improving communication, information exchange, and peer-learning within the field as a whole.

Northern California Grantmakers

\$8,542

To support participation in a regional organization that provides opportunity for collaborative action and professional development for philanthropic grantmakers..

San Francisco Botanical Garden Society	\$6,000
To support the care and maintenance of the Jennie B. Zellerbach Garden.	
Membership Dues	\$2,000
<i>Grantmakers Concerned with Immigrants and Refugees</i>	
To support a professional association that seeks to enhance grantmakers' knowledge about immigrant and refugee communities and the social and economic policies that affect them through a combination of educational services, resources, forums, and conferences.	
TOTAL Grant Support	\$40,132

Statement of Financial Position Year End 2014

ASSETS

Cash and Cash Equivalents	\$ 962,447
Investments	132,708,192
Accrued Income Receivables	47,721
Other Assets	106,490

TOTAL ASSETS**\$133,824,850****LIABILITIES AND NET ASSETS****LIABILITIES**

Accounts Payable and Accrued Expenses	\$157,639
Unconditional Grants Payable	995,000
Deferred Taxes	401,835

TOTAL LIABILITIES**1,554,474****NET ASSETS****132,270,376****TOTAL LIABILITIES AND NET ASSETS****\$133,824,850**

Board of Directors and Staff

BOARD OF DIRECTORS

William J. Zellerbach

Thomas H. Zellerbach

Charles R. Zellerbach

Nancy Zellerbach Boschwitz

Jeanette M. Dunkel

Philip S. Ehrlich Jr.

Mary Ann Milius

Stephen R. Shapiro

Suchi Somasekar

Mildred Thompson

Raymond H. Williams

OFFICERS OF THE BOARD

William J. Zellerbach, Chairman

Thomas H. Zellerbach, President

Nancy Zellerbach Boschwitz, Vice President and Secretary

Charles R. Zellerbach, Vice President and Treasurer

Raymond H. Williams, Vice President

Allison Magee, Executive Director

STAFF

Allison Magee, Executive Director

Lina Avidan, Program Executive

Cindy Cesca Yoshiyama, Grants Administrator

Heather Honegger, Finance Director

Linda Howe, Program Executive

Amy Price, Program Executive

Michael Smith, Director of Information Technology

